

# Access to University (HE) Course Guide 2024/25



# Table of Contents

- 03 – What Is an Access to University Course?
- 04 – Entry Criteria
- 04 – Fees and Funding
- 06 – Our Facilities
- 07 – Support at College
- 08 – Access to University Education
- 10 – Access to University Health Professions
- 12 – Access to University Humanities and Social Science
- 14 – Access to University Science
- 16 – Teaching, Learning and Assessment
- 16 – Access to University Graduation
- 17 – Achievement and Progression
- 19 – Career Degrees at Lincoln College University Centre

## What Is an *Access to University Course*?

**The Access to University course (Access to Higher Education (HE) Diploma) is a qualification which prepares students for study at degree level.**

It has been designed to give students relevant academic subject knowledge and the opportunity to learn how to approach study at university-level and develop techniques to help them succeed.

Successful students achieve a full Level 3 qualification, enabling them to progress to study a Higher Education course at university or college.

It is an intensive course, typically run over one year, for students aged 19 and over and especially intended for students returning to education.

The courses have been designed to complement those with work and family commitments.

### ***Achievement of the Access to HE Diploma:***

**60** credits need to be obtained to achieve the Access to Higher Education Diploma. **45** credits are graded at Pass, Merit or Distinction with **15** credits being non-graded.

University/college offers may request a specified number of credits at Merit or Distinction or a specific number of UCAS tariff points.

It is important to research university/college entry criteria and consider which Higher Education course you wish to study before starting the Access course.

# Entry Criteria

**Standard Entry** – GCSE English C/4 or above and GCSE Maths C/4 or above.

**Alternative Entry** – Functional skills Level 2 English and Maths can be accepted instead of GCSEs if intended university destination accepts this alternative qualification.

**Additional Entry Requirements:**

**Education pathway** - GCSE Science at C/4 or above (as this is an essential qualification to enter some teacher training qualifications).

**Don't meet the entry criteria?**

Please speak to one of our friendly advisers as there might be other options available.

**Application Process**

As part of the application process an informal interview, typically over the phone, will be undertaken.

**Progression**

It is advised to check the entry requirements with a university's or college's admissions team in case there are other entry criteria required before starting the Diploma.

# Fees and Funding

**Don't let paying for courses hold you back from achieving your goals.**

Students aged 19-23 who do not already have a full Level 3 qualification - this qualification is **normally free of charge**.

Students aged 19-23 on 1st September of the year of study who already have a full Level 3 qualification, and for those aged over 23, fees are payable upfront, in **instalments** or by **Advanced Learner Loan**.

For students aged 19-23, there may be fee remission if in receipt of benefits – please contact Student Services to find out more about this.

Students funded through the Advanced Learner Loan who successfully achieve their Access to University course and complete their higher-level studies, can have the balance of their Advance Learner Loan written off. Watch CAVA's Advanced Learner Loan explainer video by scanning the QR:

**Did you know?**

If you successfully go on to complete a Higher Education qualification following an Access to University course, you won't have to pay your Advanced Learner Loan back at all!



# Our Facilities

**Our students have access to a wide range of facilities - from sports and leisure, to refectories, libraries and dedicated study spaces.**

## Sports and Leisure

Our Lincoln College campus has its own leisure complex with a purpose-built gym, physical performance lab, outdoor gym, basketball courts and five-a-side football pitches all **free of charge for students to use.**

Our students can also enjoy a full range of beauty therapies and massages or visit our hair salon, Aura. Lincoln College is now also home to Escape Lincoln. Here students can play amazing games such as Sherlock, The Magic Emporium, and Contagion.

## Refectories

The Lincoln College campus has two refectories and Costa Coffee concessions offering a range of healthy and fast-food options.

## Libraries

Our spacious and well-equipped libraries are designed to provide a safe, supportive and stimulating environment for independent study.

Students have access to computers and laptops to use within the library or can also use their own laptop or mobile device with WiFi hotspots available across campus.

A team of experienced library staff are always on hand to help learners find resources for their studies. Our Library Information Advisers offer study skills workshops including; locating information for assignments and referencing.

## HE Common Room

Our Access to University students can use the HE Common Room (The Drawing Room) in the newly refurbished Gibney building. This Common Room offers computer access and WiFi, plus a kitchen area with free tea and coffee.



06

# Support at College

**We offer comprehensive and dedicated one-to-one support from enquiry to transition - from campus tours, to support with the application process or finances, we're here to support our students every step of the way.**

We have a specialist team of professional Student Support Advisors who can offer guidance and support on a wide range of financial, personal and career-related issues.

Our Student Services team are here to help students with any questions or problems they have before, during and after their time at college.

## We recognise and understand the challenges faced by adult learners.

Each pathway is designed to fit alongside family and employment commitments. Learners study on a blended timetable that involves a condensed timetable of two-days a week of face-to-face classes, alongside additional online sessions with tutors. We also offer purely evening class options for some pathways. This approach provides the flexibility and support to help busy adults balance their studies and additional responsibilities successfully.

## Careers Advice

Personal one-to-one careers guidance is available for all our students. Our fully qualified and experienced Careers Guidance Practitioners provide impartial advice and guidance.

Our qualified Careers Guidance Advisers support learners in their career planning and help them to make well informed decisions about their progression and future plans.

## They can help with:

- Career planning and career decisions
- Researching career opportunities
- UCAS applications and personal statements
- Job search and application skills, including CV advice

We help students to draw an action plan of the steps they need to take to achieve their career and education goals.

## Financial Support

Certain students may be eligible for additional financial support.

For more information about our support services for Access to University students at Lincoln College, visit our Adult support web page:

**[www.lincolncollege.ac.uk/support/adult-support](http://www.lincolncollege.ac.uk/support/adult-support)**



07

# Access to University Education

## About

The Access to University Education course is designed for students wishing to teach in primary and secondary schools and focuses on core curriculum subjects.

## Course Content

Students study core curriculum subjects - English Literature and either History or Biology with Maths.

**English Literature** – as part of the course students can build their skills of analysing literary texts. This will begin with the close analysis of a short story, focusing on imagery, characterisation, and context. Students will also study a modern novel, a selection of poetry, a modern domestic tragedy, and a Shakespearean drama. In the final unit, students will use the skills they have gained to analyse their own choice of texts.

**Biology with Maths** – in Biology students study: Cell Biology; Respiratory and Cardiac Systems; Immune System; Antibiotics, and a Regulation and Control Research Project. In Maths, students study: Introduction to Algebra; Trigonometry; Analysis of Data; Exponentials and Logarithms and Calculus.

**History** - this course has been specifically designed to suit people with a range of historical interests and broader study and career aspirations. The course explores ideas related to power, authority and

gender from the Middle Ages to the Twentieth Century Suffrage Movement; imperialism, resistance and identity in nineteenth century India; issues of reform, control and consent from Tudor England to Nazi Germany.

## Proposed Days and Times\*

Full-Time | September - June

Tuesday and Wednesday

9.30am - 3.30pm

Plus an additional four hours per week conducted online / via remote learning.

## Progression

Successful students, in the past, have progressed to universities and colleges all over the UK as well remaining locally in Lincoln. Students typically go on to study Primary Education with QTS (Qualified Teacher Status) or Education Studies.

## Experience

Prospective students are strongly advised to gain relevant work experience in a school (primary/secondary) before starting the course. Many students continue their work experience for one day a week whilst on the course.

\*Subject to change

\*\*Subject to validation



# Access to University Health Professions

## About

The Access to University Health Professions course covers three subjects relevant to degrees in healthcare at university/college: Biology, Psychology and Sociology. Biology modules include a wide range of topics, such as cell biology, nutrition and digestion, reproduction, infectious diseases, and genetics amongst others. Psychology modules explore differing psychological approaches, early social development, abnormal psychology, and memory. Within Sociology, students examine key theoretical ideas, mental health, inequalities, and death and dying.

## Course Content

- Study Skills
- Human Biology
- Sociology
- Psychology
- Maths in a Healthcare Context

## Proposed Days and Times\*

Full-Time Options | September - June

### Daytime Group:

Tuesday and Wednesday  
9.30am - 3.30pm

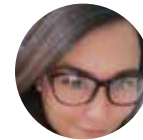
### Evening Group:

Tuesday, Wednesday and Thursday  
5.00pm – 9.00pm

Plus an additional four hours per week conducted online / via remote learning.

## Progression

Successful students will achieve a full Level 3 qualification enabling them to enter Higher Education to study Nursing, Midwifery or other health-related degrees.



**Tay Watson**  
*Access to University  
Health Professions*

“I enjoyed meeting new people, including my tutors. I’m pleased to be completing the course with grades I never thought I could achieve and the tutors are the main reason for this. They push you in a positive way and the support is phenomenal.”

\*Subject to change  
\*\*Subject to validation

Access to HE Validated By



# Access to University Humanities and Social Science

## About

The Access to University Humanities and Social Science course is designed to provide a variety of subject options in which students can choose where to specialise depending on their intended university option.

Subjects cover key areas of humanities and social science and include Psychology, Sociology, English Literature and History.

## Course Content

We offer two groups to choose from:

### Group 1 can study:

- Sociology and Psychology **or**  
Sociology and English Literature

### Group 2 can study:

- History and English Literature **or**  
History and Psychology

In Sociology, students study units such as Environment and Social Control; Mass Media; Sociology: Mental Illness; Death and Dying; Postmodernity; Research Methods.

In Psychology, students study units such as Abnormal Psychology; Research in Psychology; Conformity and Obedience; Early Social Development; Memory; Freewill and Determinism; Understanding Stress.

Please see Education pathway for details on History and English Literature.

## Proposed Days and Times\*

Full-Time Options | September - June

### Daytime Group:

Tuesday and Wednesday  
9.30am - 3.30pm

### Evening Group:

Tuesday, Wednesday  
5.00pm – 9.00pm

Plus an additional four hours per week conducted online / via remote learning.

## Progression

Students might look towards such degrees as Psychology, Sociology, Social Work, English Literature, History, or BA (Hons) Social Science at Lincoln College.

With a wide range of progression options, it is recommended to research a range of universities and courses, along with the necessary entry requirements, prior to the Access course.

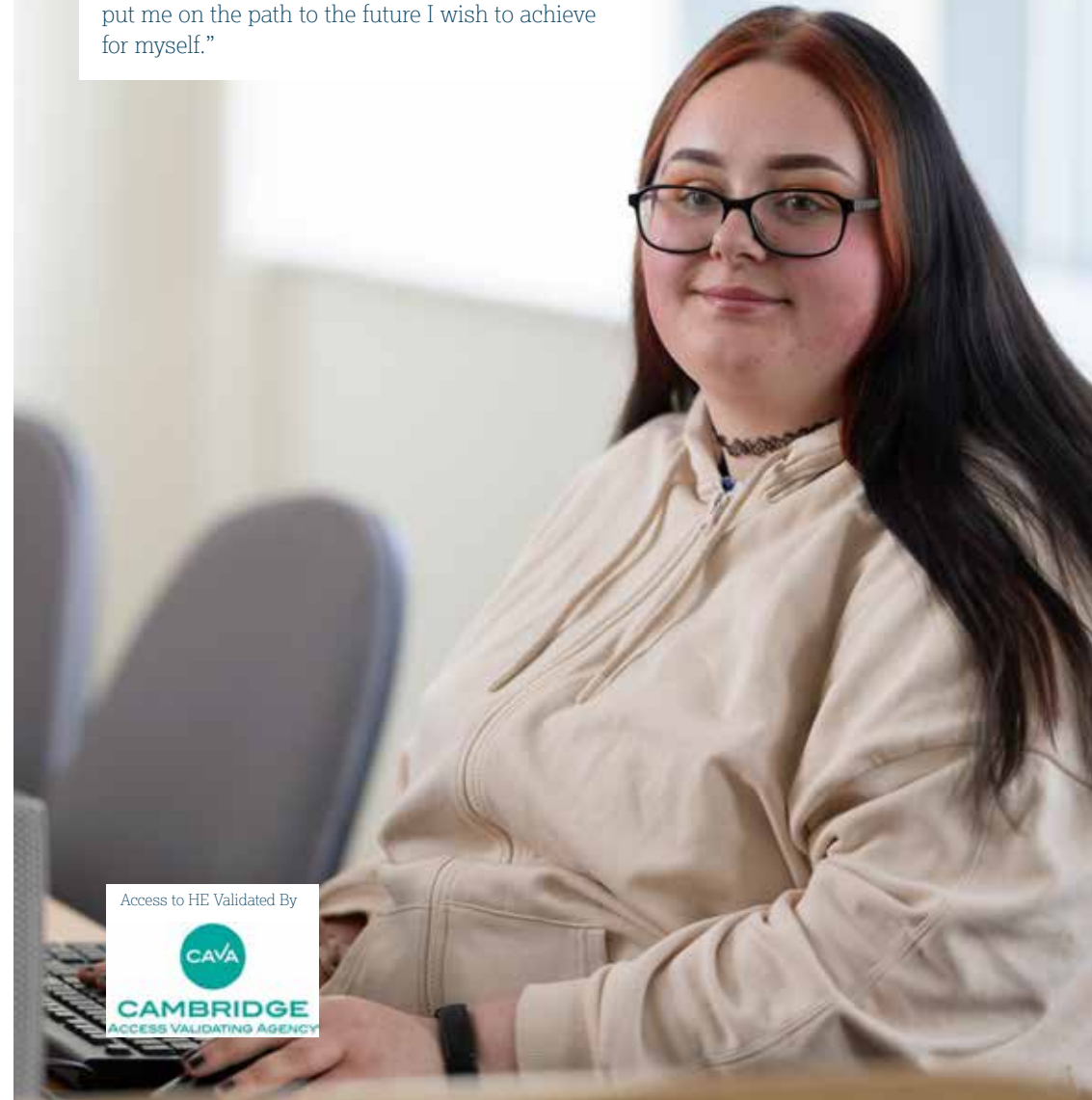


**Daniel Rae**

*Access to University*

*Humanities and Social Science*

“My experience with Access at Lincoln College is one which has taught me so much and one that I will always remember. I developed so much as a person and as a learner during my time there, and I have made friendships that I hope will continue through university and beyond. Overall, Access has put me on the path to the future I wish to achieve for myself.”



\*Subject to change  
\*\*Subject to validation

# Access to University Science

## About

The Access to University Science course aims to equip students with the skills and knowledge needed for a Science based degree. The course allows students to tailor the content studied by choosing blocks of units within Biology, Chemistry, Maths and Physics.

## Course Content

Students pick one subject in each block

Block 1 - Biology A or Physics

Block 2 - Biology B or Chemistry A

Block 3 - Maths or Chemistry B

## Subject Descriptions

### Biology A

Biology: Fundamental Biochemistry  
Human Biology: Nutrition and Digestion  
Biology: Biochemistry of Living Organisms and Plant Transport  
Biology: Ecosystems and Sustainability  
Biology: Inheritance and Evolution

### Biology B

Biology: Cell Biology  
Human Biology: Respiratory and Cardiac Systems  
Human Biology: Immune System  
Human Biology: Antibiotics  
Human Biology: Regulation and Control  
Research Project

### Chemistry A

Chemistry: Intro to Chemistry  
Chemistry: Atomic Structures  
Chemistry: Bonding, reactions, and Organic Chemistry  
Chemistry: Chemical Reactions

### Chemistry B

Chemistry: Core Chemistry  
Chemistry: Inorganic Chemistry  
Chemistry: Physical Chemistry  
Chemistry: Organic Chemistry

### Maths

Mathematics: Introduction to Algebra  
Mathematics: Trigonometry  
Mathematics: Analysis of Data  
Mathematics: Exponentials and Logarithms  
Mathematics: Calculus

### Physics

Physics: Forces and Waves  
Physics: Electricity  
Physics: Linear Motion and Mechanics  
Physics: Nuclear and Medical Physics  
Physics: Astrophysics

## Proposed Days and Times\*

Full-Time | September - June

Tuesday and Wednesday

9.30am - 3.30pm

Plus an additional four hours per week conducted online / via remote learning.

## Progression

Successful students achieve a full Level 3 qualification enabling them to progress to university or college to study a degree within Science, Maths, Engineering or Computing.

\*Subject to change  
\*\*Subject to validation



**Anthony Clarke**  
*Access to University  
Science*

“The course was fast-paced, but there was plenty of support to both develop subject knowledge and academic skills to ensure you kept pace. Teaching staff were always willing to help wherever required, and the cohort of students were friendly and engaged to learn. After finishing the Access course, I went on to gain a BSc (Hons) in Biomedical Science and now work as a Microbiology Analyst for a large food production plant.”



Access to HE Validated By





# Teaching, Learning and Assessments

## Teaching and Learning

Students learn in classrooms, practical rooms or computer labs to cover a range of theoretical and practical content. Lessons can vary, for example, lessons may be formal lecture based, seminar type sessions, practical sessions or IT based sessions.

## Assessments

The Access to University course is achieved through completion of assessments over the academic year. These assessments vary amongst the diplomas but may include: reports, essays, research projects, exams and presentations.



# Access to University Graduation

After completion of the Access to University course, we celebrate our students' achievements through a small graduation ceremony.

Teachers and students, along with their friends and family, are invited to come together to mark this fantastic milestone, acknowledge learners who have made key accomplishments, and wish students well on the next stage of their journey to Higher Education.



# Achievement and Progression

For academic year 2021-2022, the pass rate for the Access to University course was **100%**.

Of this, **83%** of learners progressed onto Higher Education and a further **16%** went into employment.





# Career Degrees at Lincoln College University Centre

**A highly competitive job market across most sectors can make securing graduate roles challenging. That's why we've developed Career Degrees, to give our students the opportunity to get ahead of the competition at interview and help them secure the career of their dreams.**

Our **classes are smaller** which means our students can receive more one-to-one time with their tutors, as well as engaging debates and collaborative working with fellow students.

With our **condensed timetables**, students may choose to work while studying, look after family or enjoy a better study-life balance. Plus, our university-level students graduate in an annual ceremony held in and around the grounds of the historic Lincoln Cathedral.

We have a variety of degrees covering a wide range of subject areas. Visit our website to learn more about these and the many benefits of studying a degree at Lincoln College.

## Financial Support

We understand finances can be a barrier for accessing Higher Education. At Lincoln College University Centre, we have a number of ways we can help students progressing onto a degree with us, including:

### HE Returner Incentive

The Lincoln College HE Returner Incentive of **£1,000** is available to students who complete the Access to University course and progress directly onto a full-time Higher Education course at Lincoln or Newark College.

### Career Degree Bursary

A bursary of up to **£500** for full-time students and up to £250 for part-time students over the course of the Career Degree programme is also available to our students. The bursary is designed to help support any aspect of independent study which could include: equipment such as a laptop or camera, home office furniture, software such as Adobe or course specific equipment. In addition, course coordinators are allocated an additional payment to spend each year on enhancements that will support the development of employability skills and progression to graduate-level employment.



To learn more about our Career Degree programmes, visit:  
[www.lincolncollege.ac.uk/university-centre](http://www.lincolncollege.ac.uk/university-centre)





**Apply Today**

[www.lincolncollege.ac.uk/access](http://www.lincolncollege.ac.uk/access)

**For More Information**

01522 876000 | [appa@lincolncollege.ac.uk](mailto:appa@lincolncollege.ac.uk)



Please pass me on to a friend or recycle me.

All information in this guide is correct at the time of printing.

For the latest information please visit our website.



SCAN ME